



# eBuddy

## The versatile eWON configuration tool

ver 1.1

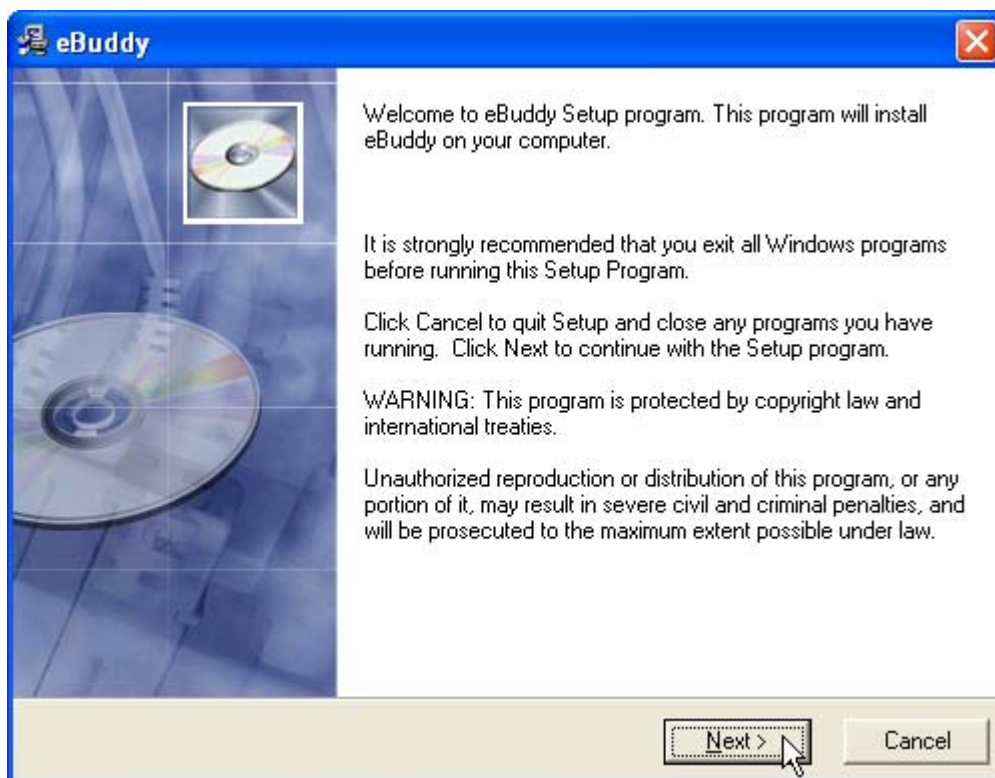
### 1 Purpose

*eBuddy* is an ACT'L software that can be used (among other purposes) to setup the IP address from the eWONs that are connected on your network. It can be considered as the new generation from the *eWONCfg* tool that had been developed when the first eWON was just launched.

Compared with *eWONCfg*, *eBuddy* is more userfriendly, because it embeds a Wizard Mode, and it allows the user to easily upgrade the firmware from any eWON that is connected on the network, and it even allows to reach the web interface from the eWONs by a simple click!

### 2 eBuddy setup

After you have downloaded *eBuddy* from the eWON web site (<http://www.ewon.biz>), you will just have to launch *eBuddySetup.exe* and to follow the instructions from the setup wizard:



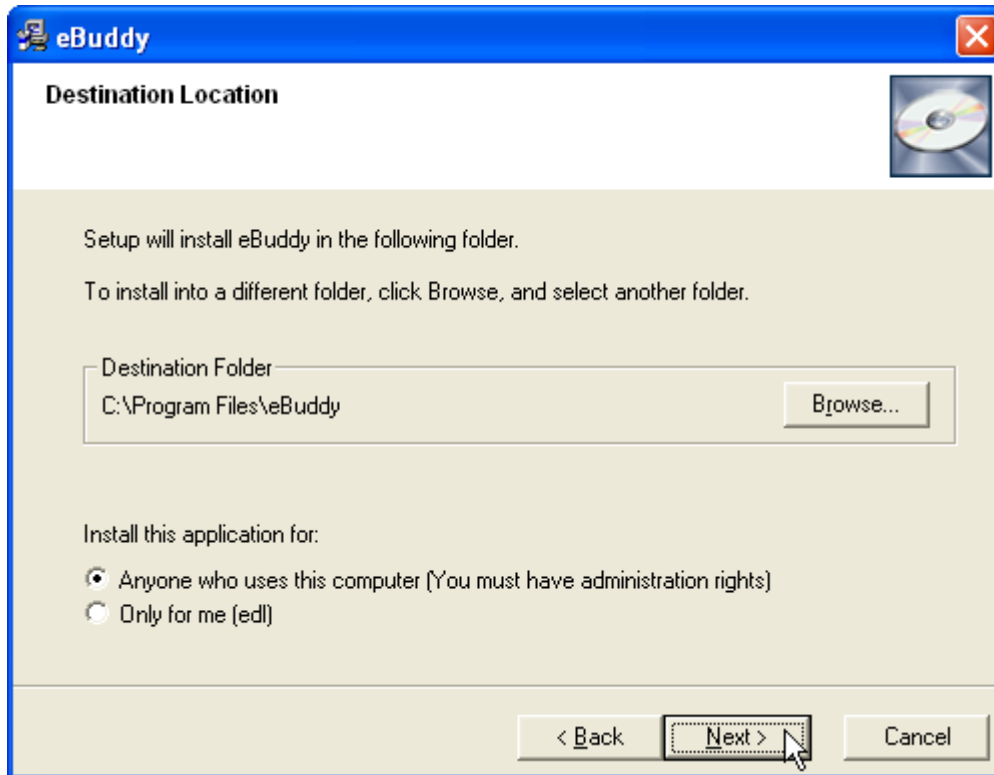


# eBuddy

## The versatile eWON configuration tool

ver 1.1

Click on **Next** to reach the following page. Choose the destination installation folder then click on **Next**:



Click **Next** in the confirmation page. The software is then installed in the chosen destination folder. Click on the **Finish** button to exit from the installation and launch eBuddy.

## 3 Using eBuddy

### 3.1 The Wizard mode



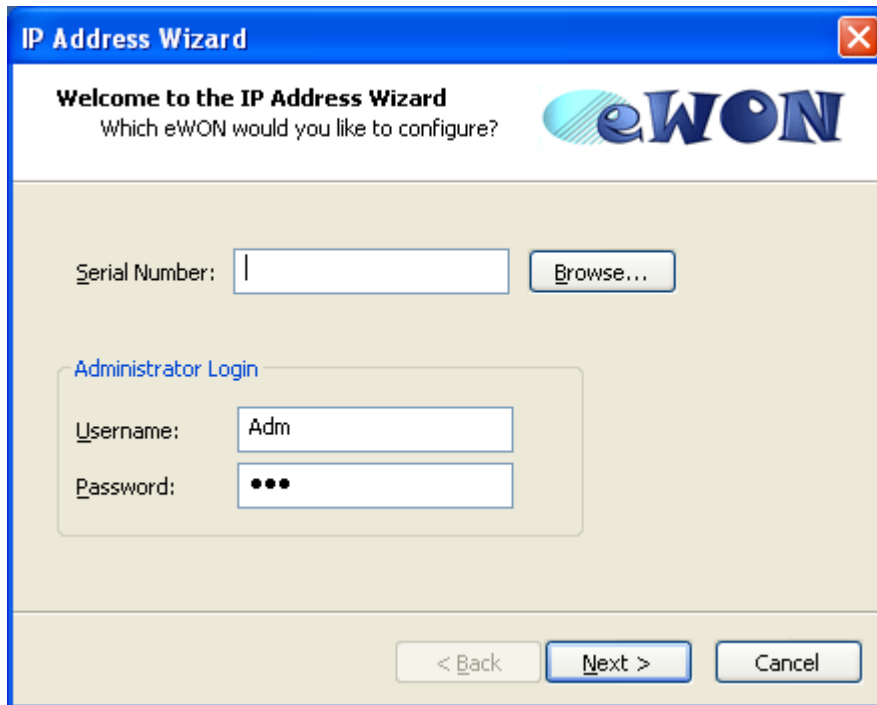
The interface embeds four menus\* (*File-View-Tools-Help*) and a home page containing five links, four of them allowing you to use the eBuddy features; the fifth one allows you to switch to List Mode\*\*, in which the eWONs connected on your network are directly listed (see [The eBuddy List Mode on page 17](#)).

\* Those menus are common to the Wizard Mode and to the List Mode.

\*\* eBuddy always starts in the last used mode (Wizard or List).

### 3.1.1 Setting an eWON IP Address

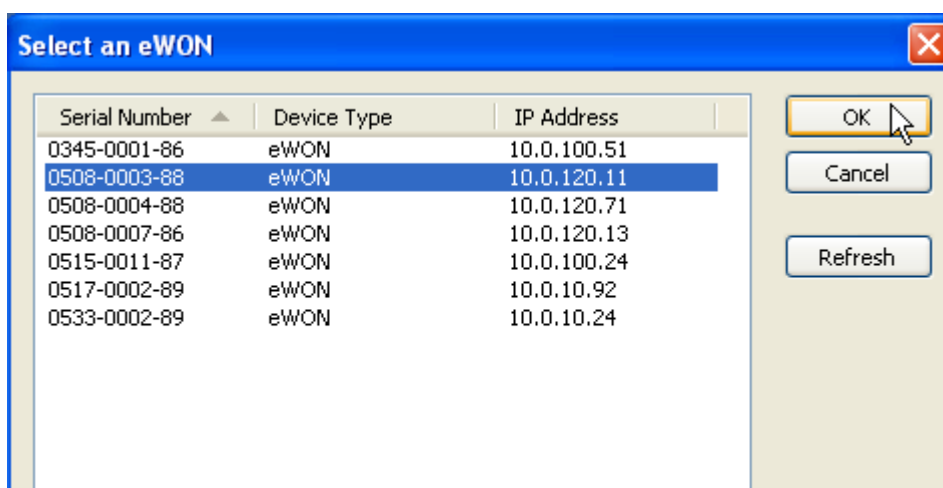
By clicking on the **Set IP address** link, you can set or modify the IP address of any eWON that is connected on your network:



The IP Address Wizard dialog box has a blue title bar with the text "IP Address Wizard" and a close button. The main area is light beige and contains the following elements:

- A welcome message: "Welcome to the IP Address Wizard" followed by "Which eWON would you like to configure?" and the eWON logo.
- A "Serial Number:" label next to a text input field and a "Browse..." button.
- An "Administrator Login" section containing a "Username:" label with an input field containing "Adm" and a "Password:" label with an input field containing three dots.
- Navigation buttons at the bottom: "< Back", "Next >", and "Cancel".

Enter the eWON serial number in the **Serial Number** field if you know it, or click on the **Browse** button. In this case, the dialog box below then displays:



The "Select an eWON" dialog box has a blue title bar with the text "Select an eWON" and a close button. It features a table with the following data:

Serial Number ▲	Device Type	IP Address
0345-0001-86	eWON	10.0.100.51
0508-0003-88	eWON	10.0.120.11
0508-0004-88	eWON	10.0.120.71
0508-0007-86	eWON	10.0.120.13
0515-0011-87	eWON	10.0.100.24
0517-0002-89	eWON	10.0.10.92
0533-0002-89	eWON	10.0.10.24

To the right of the table are three buttons: "OK" (with a mouse cursor over it), "Cancel", and "Refresh".



# eBuddy

## The versatile eWON configuration tool

ver 1.1

Select the eWON of which IP address you want to modify and click **OK**.  
You then come back to the previous wizard page, in which you must then enter the **Username** and **Password** fields (default: adm/adm) that are required to connect to the eWON:

**IP Address Wizard**

Welcome to the IP Address Wizard  
Which eWON would you like to configure?

Serial Number: 0508-0003-88 Browse...

Administrator Login

Username: Adm  
Password: ●●●

< Back Next > Cancel

Then click on **Next** and set the **IP Address** and **Subnet Mask**:

**IP Address Wizard**

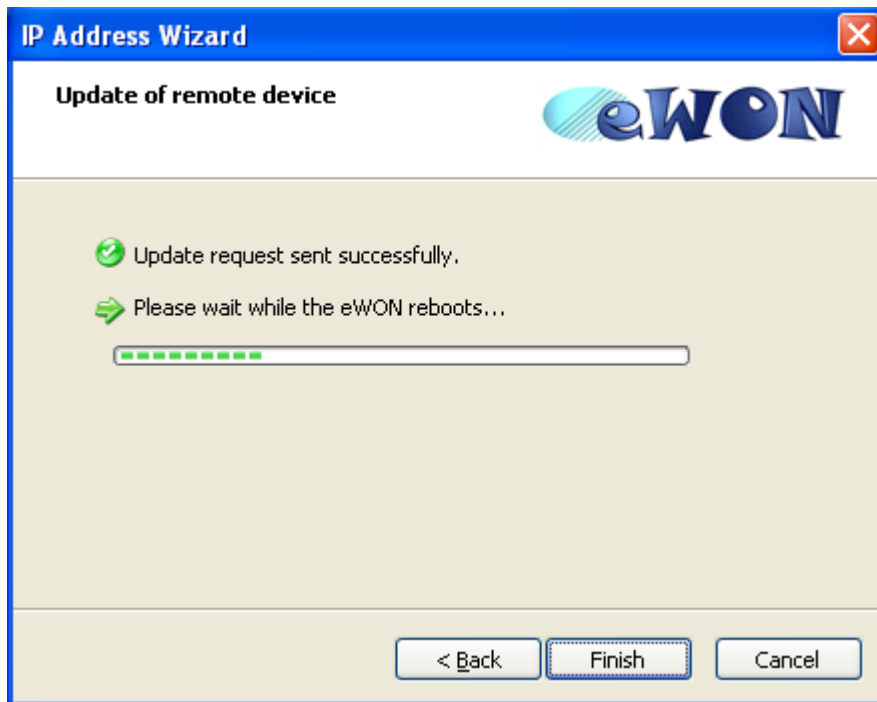
**IP Address**  
Here you can specify the new IP settings

Serial Number: 0508-0003-88

IP Address: 10 . 0 . 120 . 11  
Subnet Mask: 255 . 255 . 0 . 0  
Gateway: 0 . 0 . 0 . 0

< Back Next > Cancel

Then click on **Next** again to launch the update and wait for the eWON to reboot:



When done, click on **Finish** to exit from the IP Address Wizard.



### 3.1.2 Updating an eWON's firmware

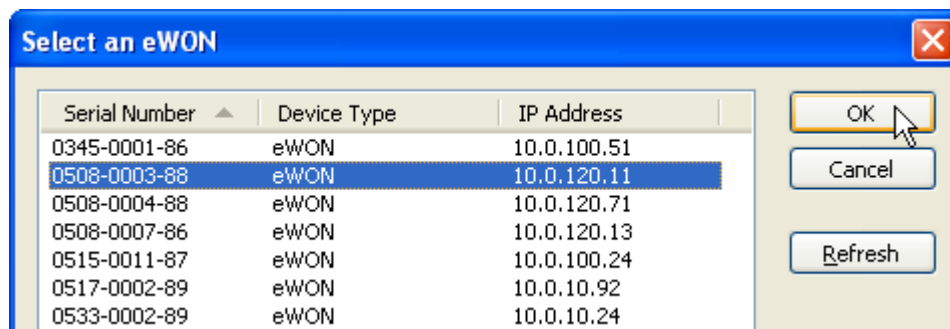
eBuddy allows you to update your eWONs with the latest firmware versions that are available for download from the eWON web site.

eBuddy downloads the firmwares and it stocks them in a folder on the local machine.

When you use the *Update Firmware* feature, eBuddy compares the firmware on the selected eWON with the latest firmwares, and it proposes to you to upgrade your eWON with one of the stored and up-to-date firmwares.

That means you first have to update eBuddy itself prior to upgrade the eWON firmware (see [Update eBuddy on page 10](#)).

The **Update Firmware** link in the eBuddy Wizard home page is used if you want to update the firmware from one of the eWONs on your network. Click on the link to launch the wizard:

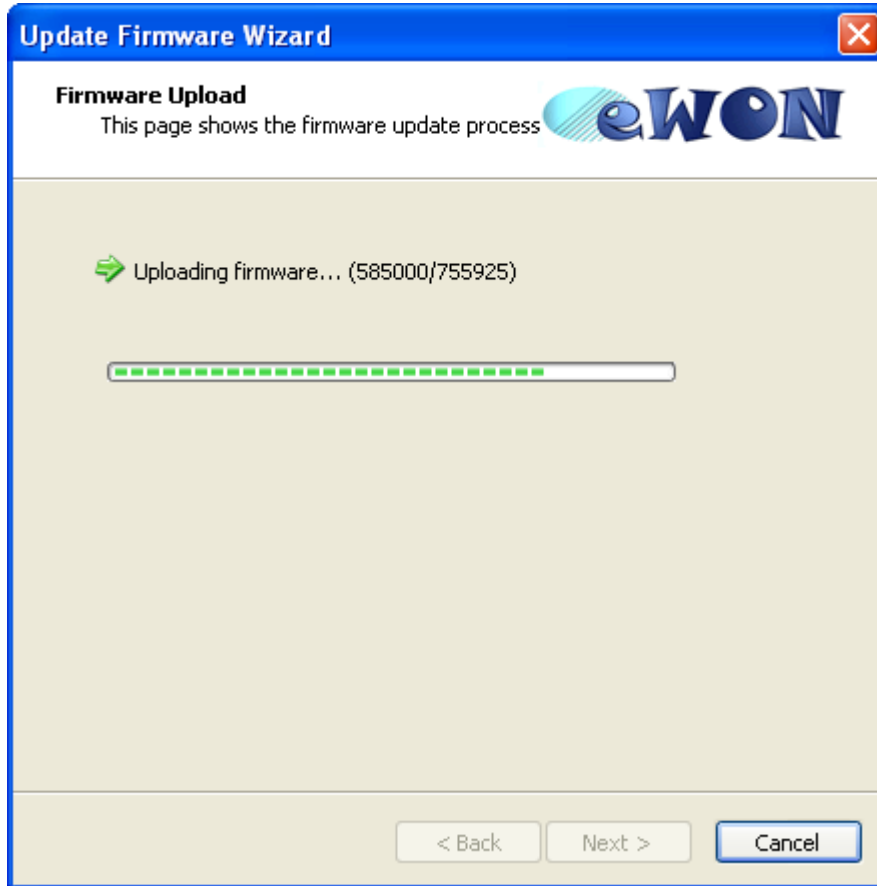


Select an eWON, either by entering directly its serial number or by choosing it in the *Select an eWON* dialog box; enter the login and password for the eWON, then click on **Next** in the *Update Firmware Wizard*.



Select the firmware **Language** and **Version** you want to apply, then click **Next**.

The new firmware is uploaded to the selected eWON:

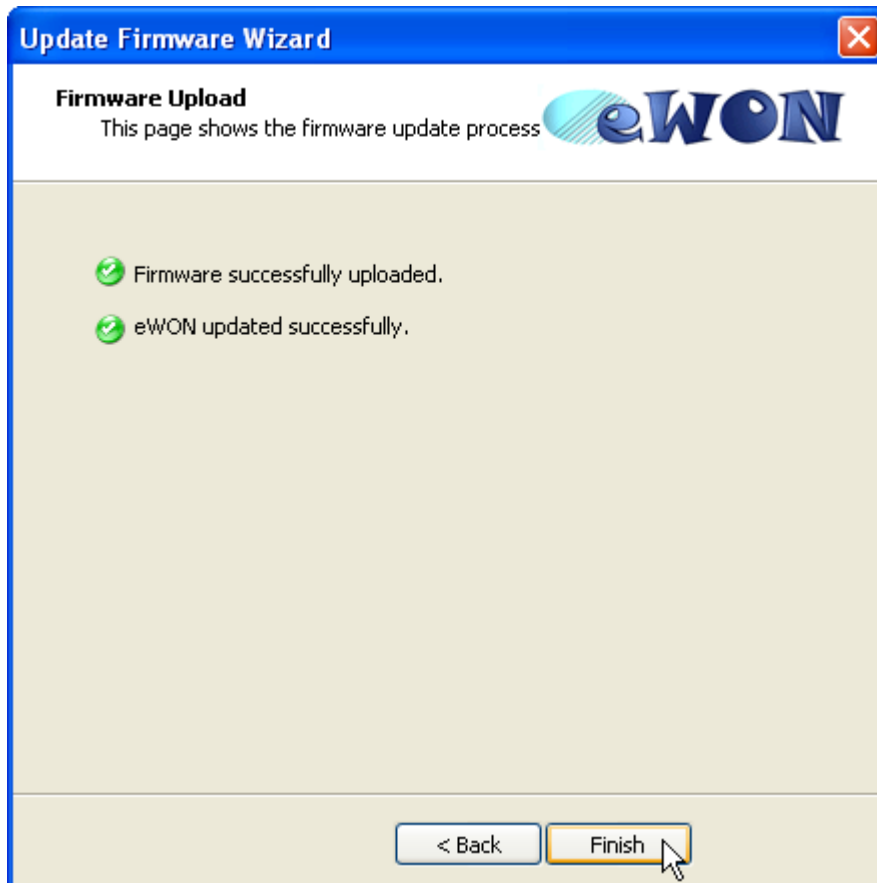




Click on Next when upload is complete, the following dialog box then appears.  
Please DO NOT power OFF the eWON when it restarts, or this could lead to make it unusable.



Click on the **Finish** Button when the upgrade is complete and exit from the Wizard.

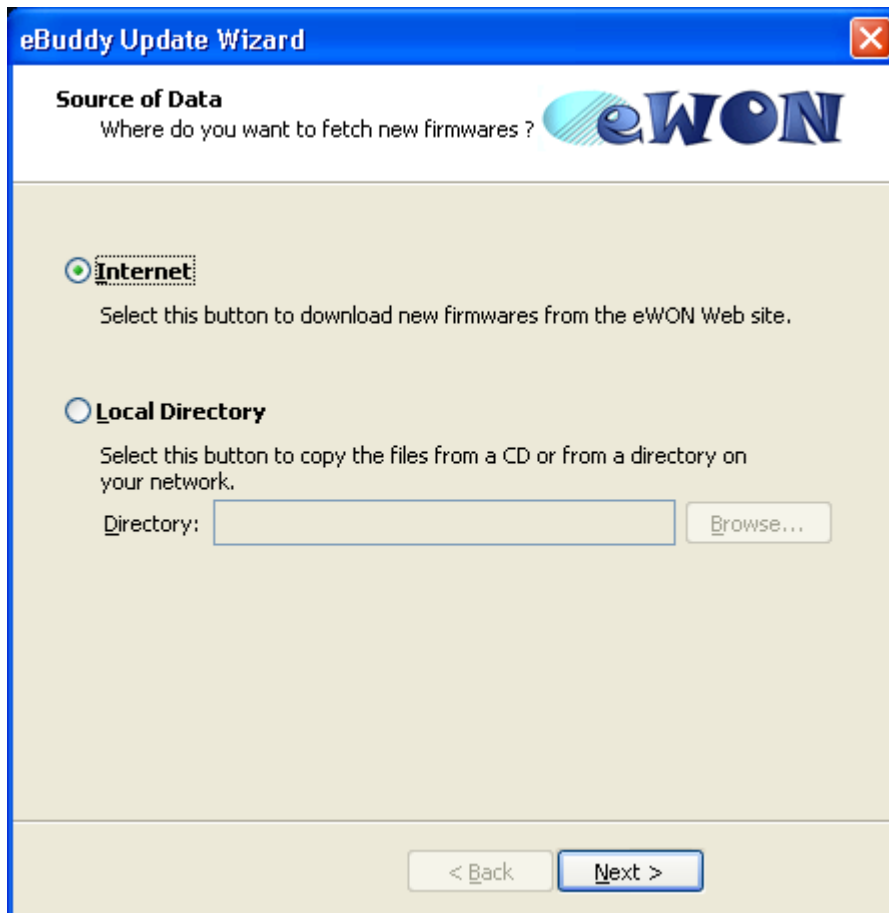


### 3.1.3 Update eBuddy

The Update eBuddy verify two things: the availability of new eWON firmwares and new eBuddy program version.

Click on the **Update eBuddy** link to start the update wizard.

This update could be from *Internet* or from a *Local Directory*.



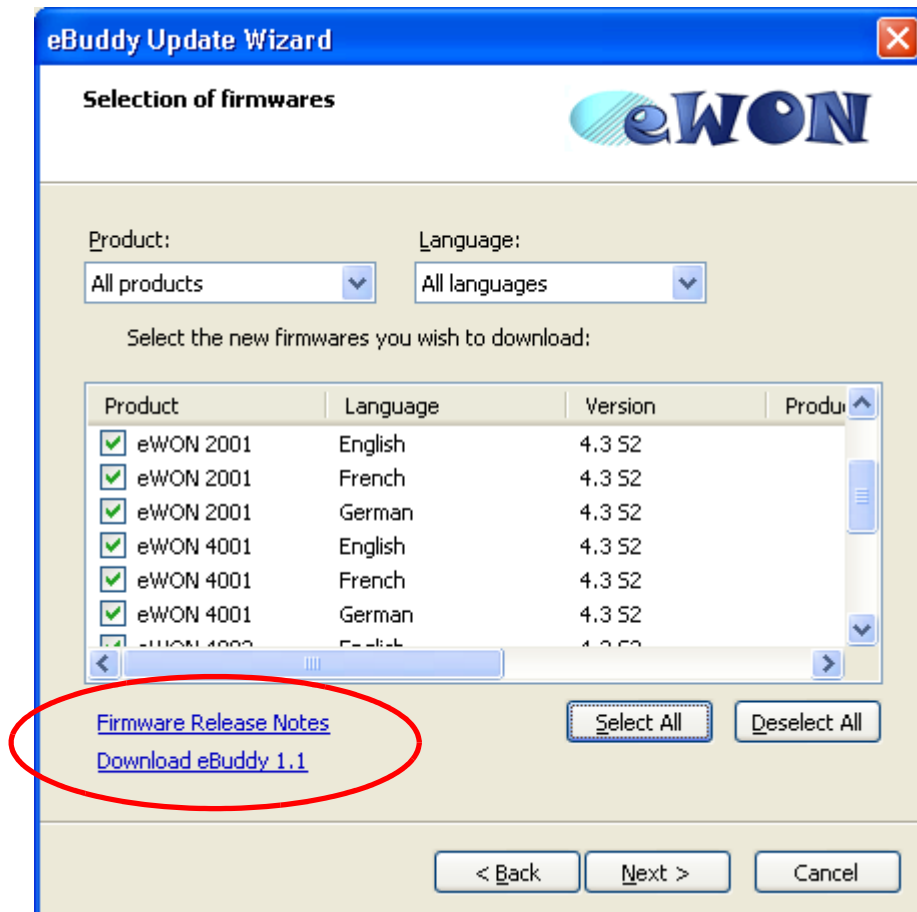
Choose **Internet** will connect you automatically to the eWON official website (www.ewon.biz) where you always find the latest firmware versions. You need an Internet connection to use this choice !

If you choose **Local Directory**, you must select an accessible directory on your network where your network administrator have placed all the firmware files you need.

Choose the place where the update files are and click on the **Next** button.

### 3.1.3.1 Internet Update

The eBuddy application will download the latest eWON firmware versions on your local computer. The first page from the Wizard allows you to choose which firmware version and language to download (with two scroll lists):



You just have to check or uncheck all or any from the proposed firmwares to download.

Click on **Next** when done

Notice the two Links (bounded in red).

The first link will show you the Firmware Release Notes containing all changes made inside firmware.

The second one, **Download eBuddy x.y**, is present only if a new version of eBuddy program is available on the eWON website. This link will redirect you to the eBuddy download page.

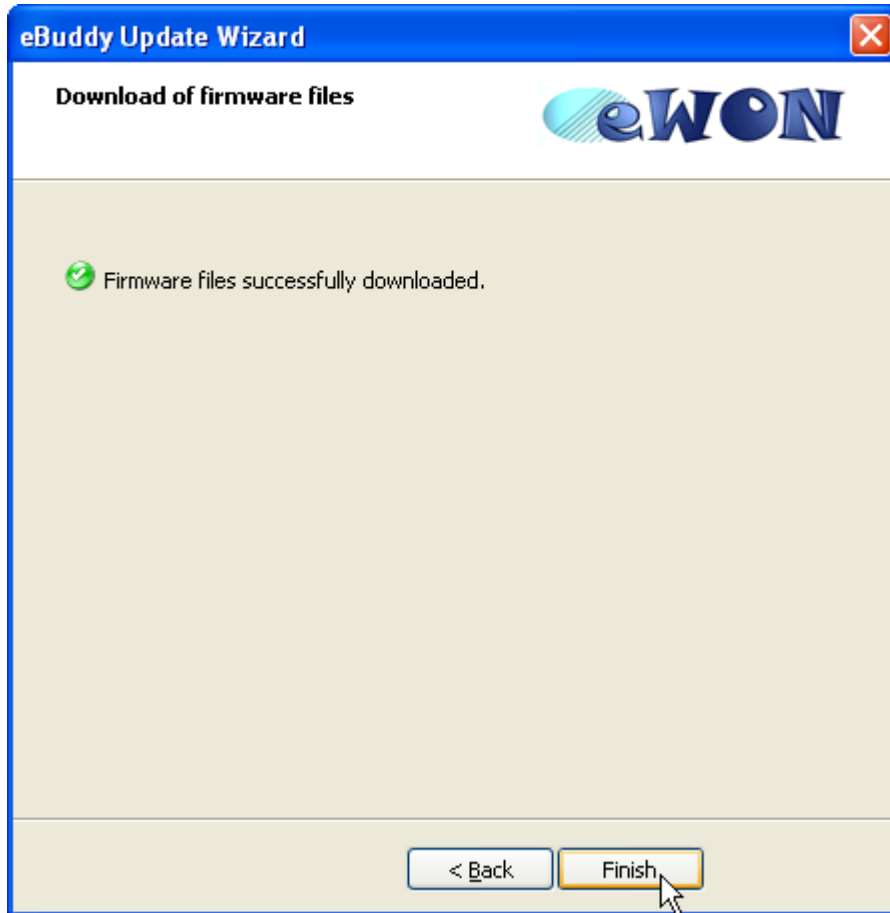


# eBuddy

## The versatile eWON configuration tool

ver 1.1

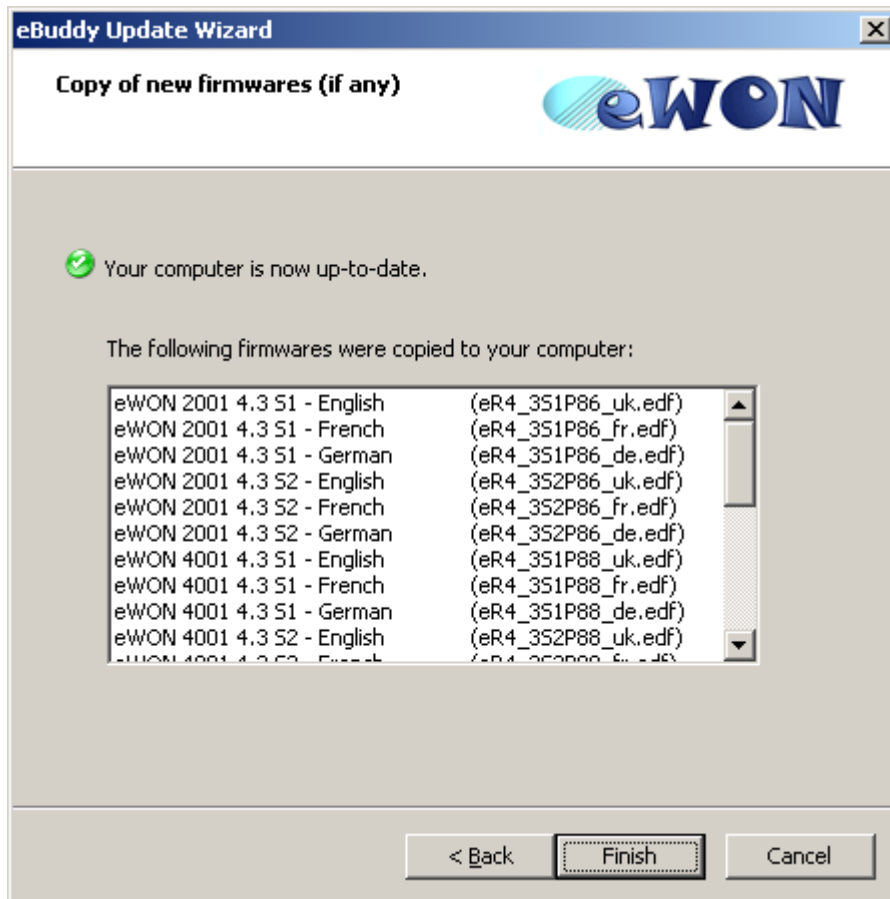
A dialog showing the download progression bar appears, at the end the dialog box below appears with a successful message. Click on **Finish** to exit from the Wizard:



You have updated your eBuddy.

### 3.1.3.2 Local Directory

If you choose the eBuddy Update from a local directory, the copy of firmware files is automatically done and the following dialog box will show the list of files copied..

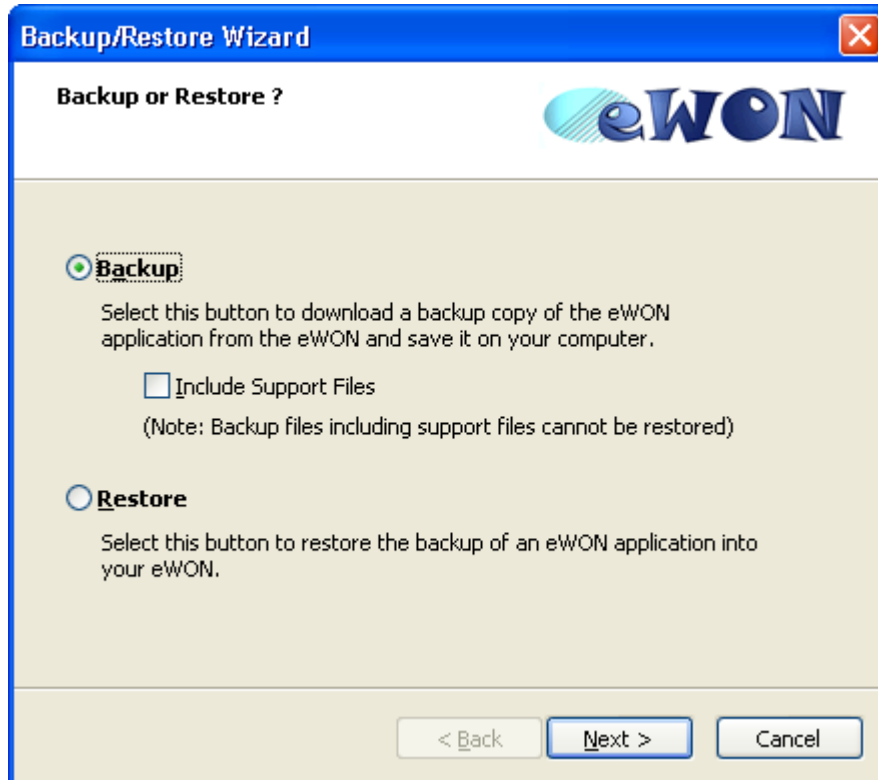


The description of the content of this Update eBuddy directory is detailed on [Local directory for Update eBuddy on page 21.](#)

**Note: The eBuddy Program itself cannot be update from a Local Directory!  
You need an Internet connection to do that.**

### 3.1.4 Backup/Restore an eWON

eBuddy offers you a simple way to **Backup** or **Restore** your eWON.



The backup procedure downloads all necessary files to have an image of your eWON. All these files are packed in an archive of type TAR. This archive allows you to make a *copy* of your eWON.

You can set an option '*Include Support Files*' to add all dynamic files showing the current status of the eWON. These files are required by the Support Team to investigate your application.

A simple backup save following files:

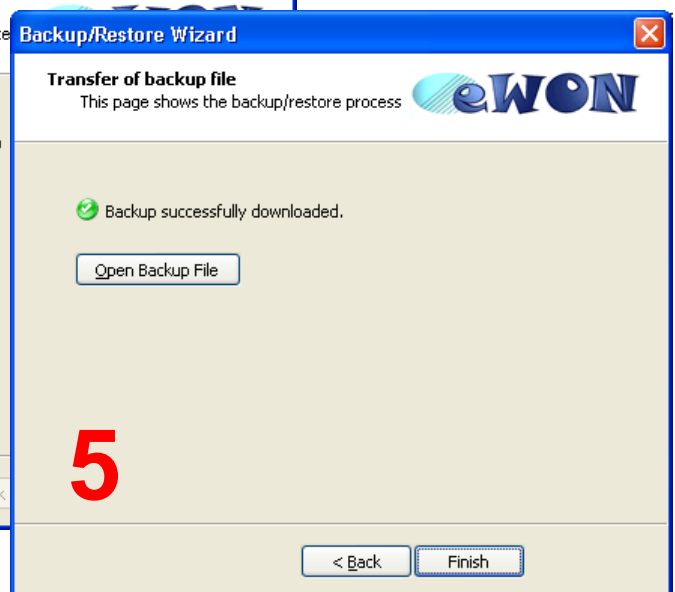
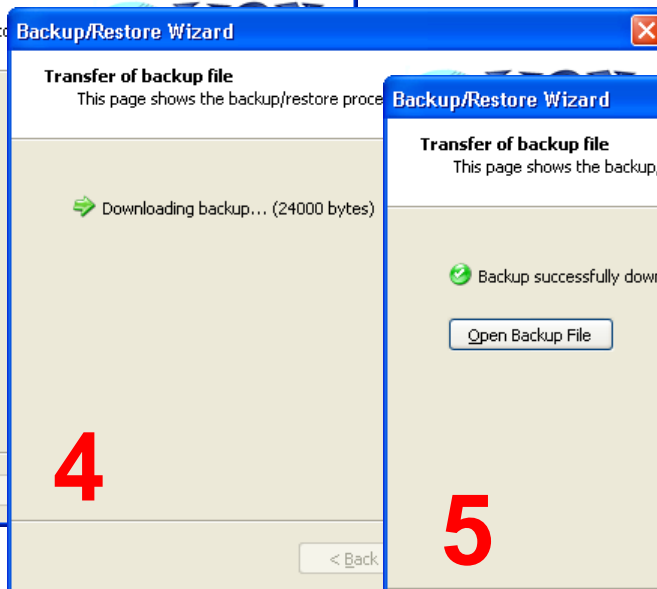
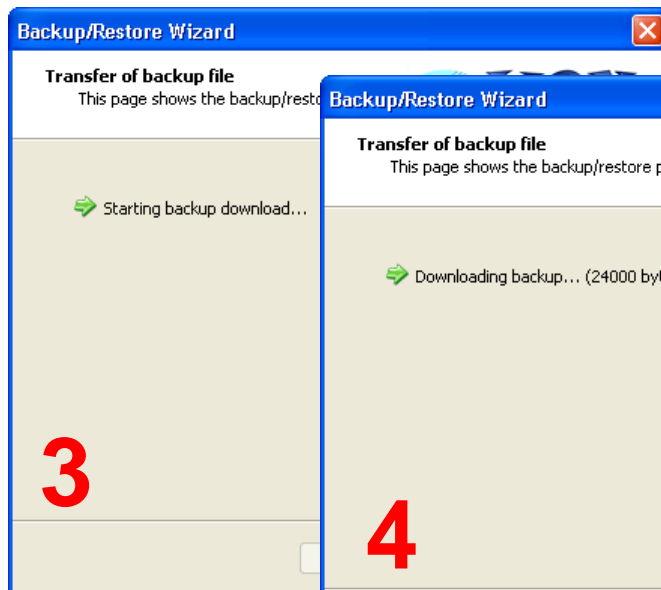
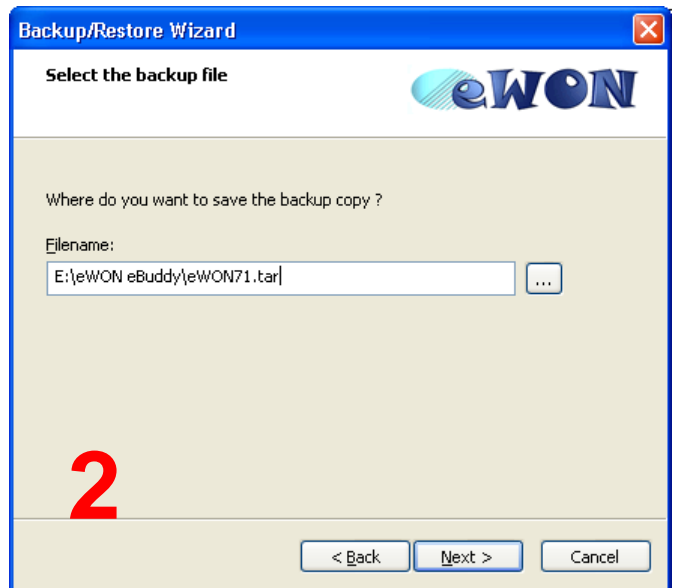
- **config.txt**
- **comcfg.txt**
- **program.bas**
- **/usr/\* directory (all files and sub-directories)**

With the '*Include Support Files*', the following files are added:

- **events.txt**
- **sysinfo.txt (text equivalent of the estat.htm eWON file)**

### 3.1.4.1 Backup your eWON

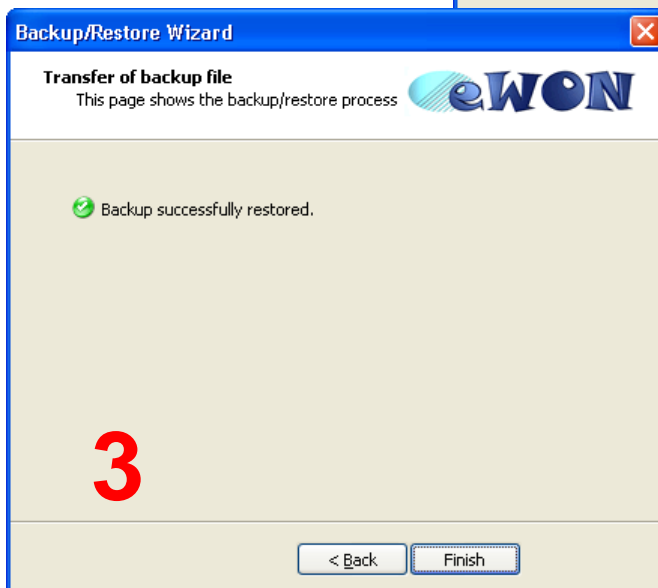
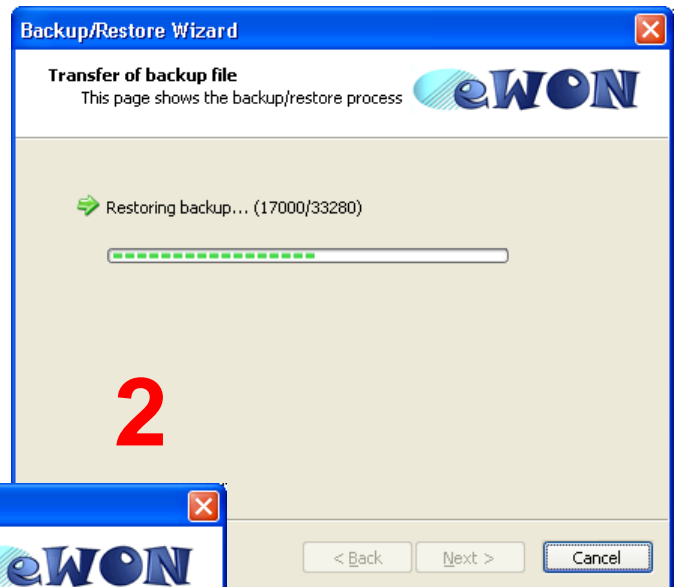
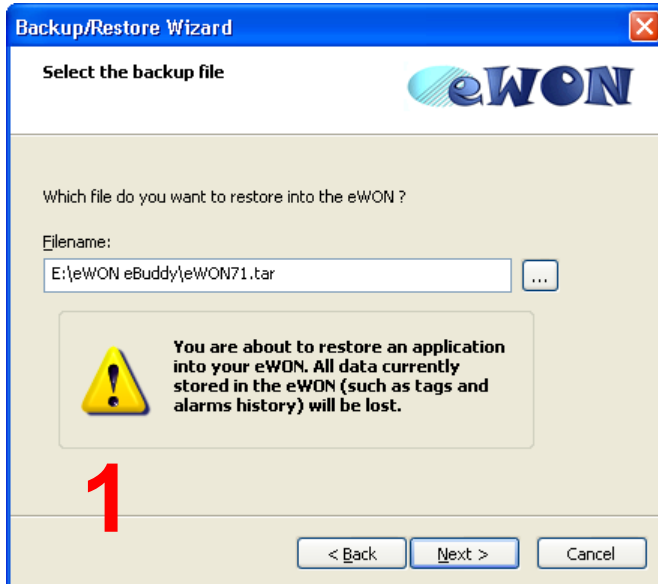
- Set its IP address with an administrator login/password
- Select the destination file name of your backup archive
- Wait the end of the download



With the 'Open Backup File' button, you can open the archive. You need an application linked to the .tar extension (generally, packer/zipper programs are able to open TAR files).

### 3.1.4.2 Restore your eWON

- Select the archive file containing the eWON files
- Wait the end of the Restore process



**IMPORTANT: At the end of the restore, the eWON automatically reboot !**

### 3.1.5 Switch to List Mode (Advanced)

The **Switch to list mode (advanced)** link from the Wizard allows you to exit from the Wizard Mode to switch to List Mode, which is dedicated for advanced eWON users, or to users who were accustomed to use the former eWONcfg tool (see next chapter).





# eBuddy

## The versatile eWON configuration tool

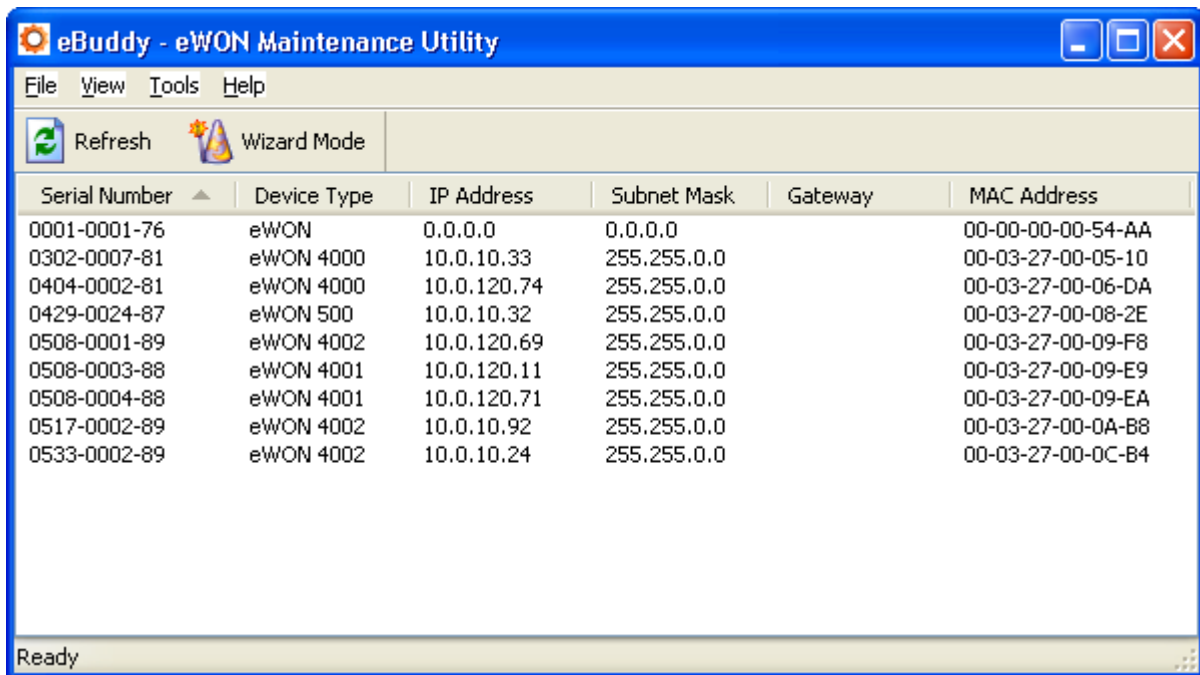
ver 1.1

### 3.2 The eBuddy List Mode

#### 3.2.1 Introduction

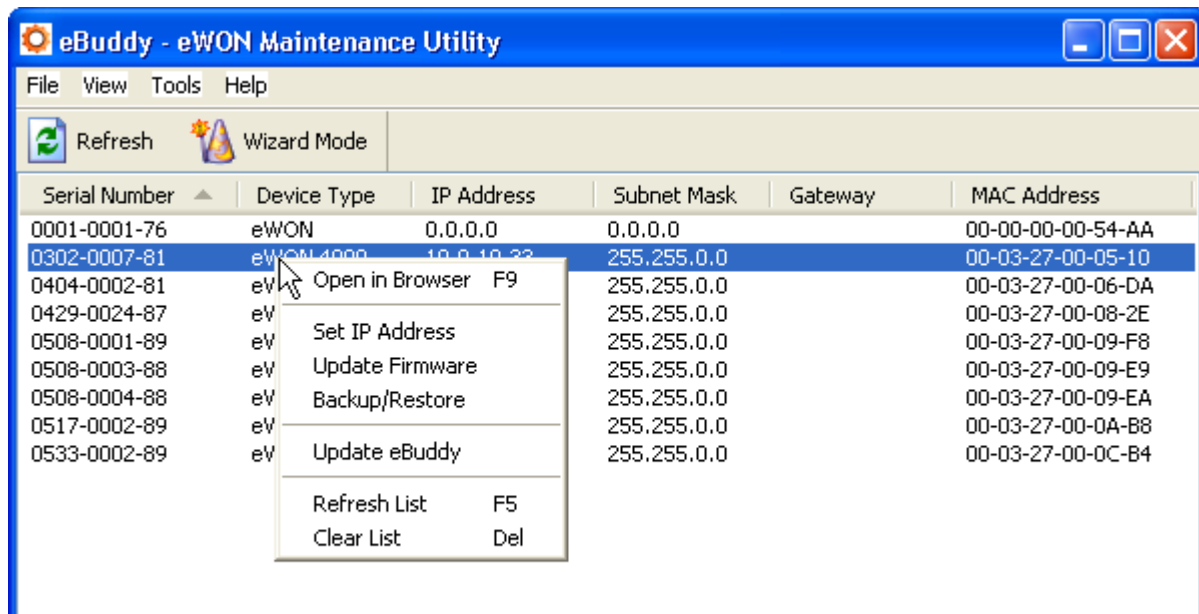
Note: it is possible to switch from Wizard Mode to List Mode by entering CTRL+L, and also to switch from List Mode from Wizard Mode by entering CTRL+W.

The eBuddy List Mode is designed for advanced eWON users who prefer to access more quickly to the dialog boxes that are required to perform the eBuddy operations on the eWON. In List Mode, there is no home page from which you can launch Wizards by just clicking a link, but a blank window in which the eWONs that are connected on your network are listed:



### 3.2.2 The List Mode interface

The menus contain the same features as the one detailed in the above Wizard Mode chapter. The best way to access those features in List Mode is by selecting an eWON in the list and right-clicking on it to display a menu in which all the available features are listed:



#### 3.2.2.1 Open in Browser (F9)

eBuddy allows you to directly launch the web interface from a selected eWON by just a click! The only condition is that eWON must have the same Subnet Mask as your local machine, or browsing it would be impossible (you can change the Subnet Mask from an eWON by means of the *Set IP address feature*).

#### 3.2.2.2 The eBuddy features in List Mode

The eBuddy configuration wizards you can launch from the List Mode right-click menu are exactly the same as those you can launch from the homepage links in Wizard Mode.

See [Setting an eWON IP Address on page 4](#), [Updating an eWON's firmware on page 7](#), [Backup/Restore an eWON on page 14](#) and [Update eBuddy on page 10](#) to get a detailed explanation on how those parameters can be set.

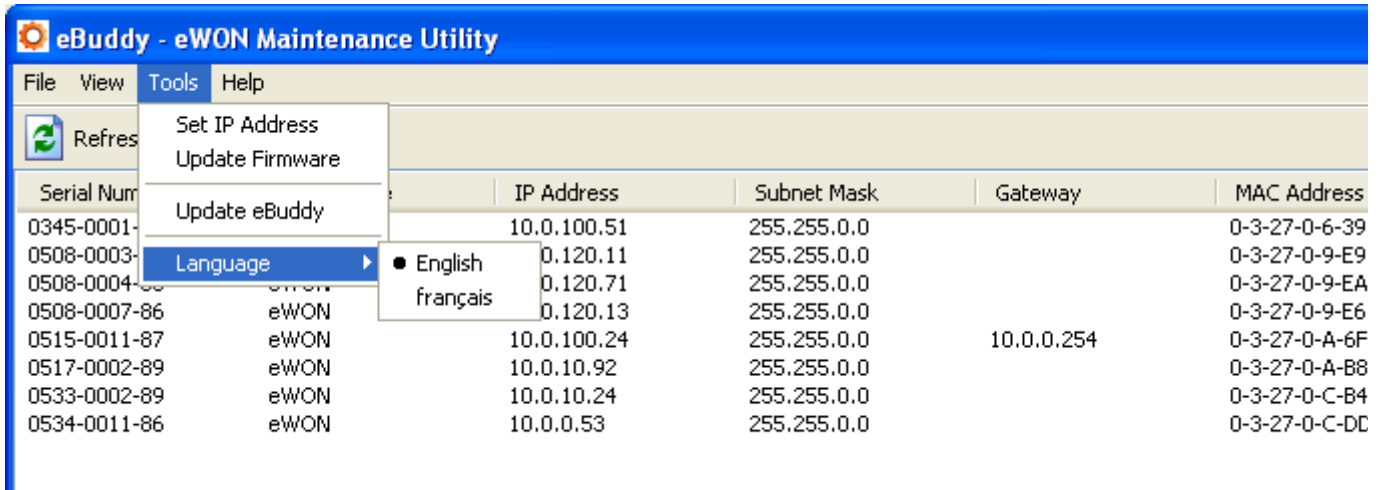
You can always refresh the eWON list by means of the *F5* key, or by clicking on the **Refresh** button in the toolbar.

You can also clear the eWONs list by means of the *Del* key (just make a refresh if you want to display the eWONs that are connected to your network again).



### 3.3 Choosing a language for eBuddy.

eBuddy is a multilanguage software. You can easily change the interface language by selecting the **Language** item from the **Tools** menu\*:



Choose a new language. A message appears, asking you to restart eBuddy. If you don't, you will still be able to use eBuddy, but it will display in the former language until you restart it.

\* The way to change the language is the same for the List Mode and for the Wizard Mode.

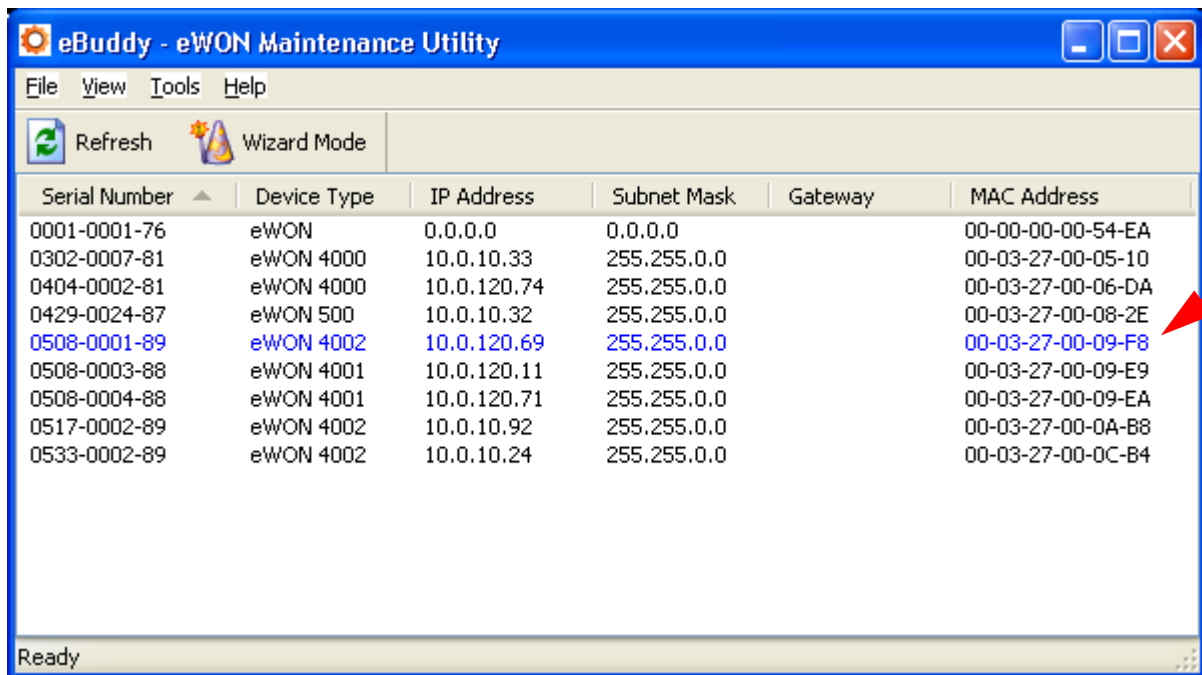


### 3.4 eBuddy tips and tricks

#### 3.4.1 How to easily retrieve the last connected eWON

In case you have a lot of eWONs that are connected on your network, it can be tricky to retrieve one of them beyond the eBuddy list.

- 1 ) Open eBuddy in List Mode if not already done. The list of connected eWONs appears.
- 2 ) Now connect the eWON, then click on the **Refresh** button. You can check that the newly (re)connected eWON appears in blue color in the eWONs list:





## 4 Appendix

### 4.1 Local directory for Update eBuddy

If you *Update eBuddy* from a Local Directory ([See "Update eBuddy" on page 10.](#)), eBuddy could only get the eWON firmwares from this directory.

eBuddy couldn't upgrade itself from a local directory.

This directory contains all the firmwares you want to share on your local network.

These firmwares file names are with the following names format:

#### **eRx\_xSyPz\_aa.edf**

with

- x\_x : version of firmware (i.e.:4\_3)
- y : Service release (i.e.: 2)
- z : eWON type
  - 89 for an eWON4002
  - 88 for an eWON4001
  - 87 for an eWON500
  - 86 for an eWON2001
- aa : language of the firmware
  - uk for English
  - fr for French
  - de for German

Examples:

**eR4\_3S1P86\_uk.edf** is the english firmware version 4.3 service release 1 for eWON2001

**eR4\_2S0P89\_de.edf** is the german firmware version 4.2 service release 0 for eWON4002

