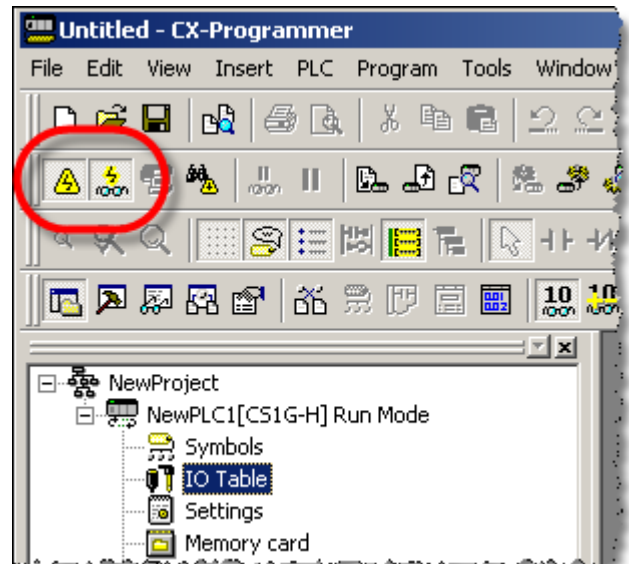


KB Name	Ethernet setup of OMRON PLC		
Type	KB		
Since revision	NA		
KB Number	KB-0011-0	Build	4
Mod date	4. Mar 2008		

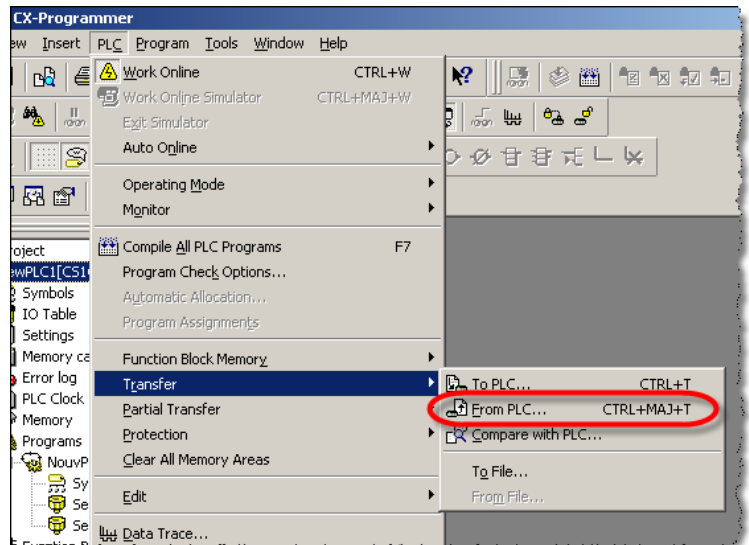
Knowledge Base Information

Ethernet setup of OMRON PLC

Step 1: Connect your CX-Programmer software to your Omron-PLC and go "online".



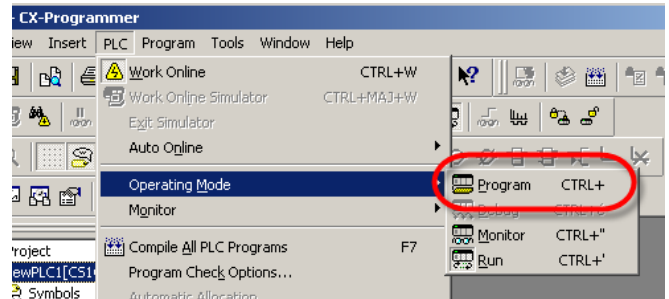
Step 2: "Transfer from PLC" all the settings of your PLC.



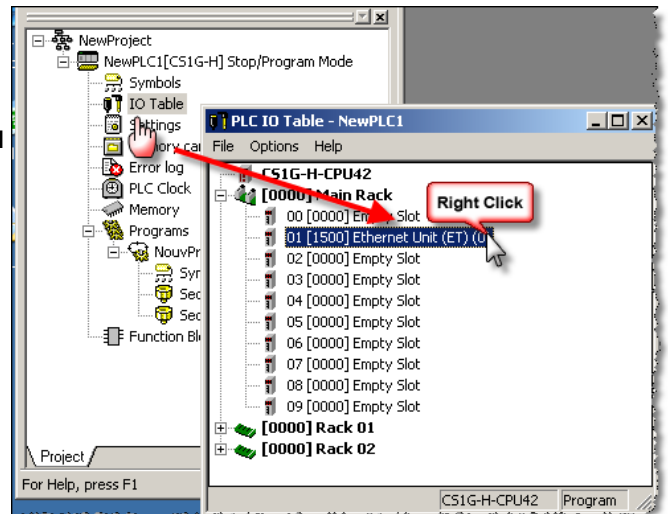
KB Name	Ethernet setup of OMRON PLC		
Type	KB		
Since revision	NA		
KB Number	KB-0011-0	Build	4
Mod date	4. Mar 2008		

Knowledge Base Information

Step 3: Stop the PLC
(switch to PROGRAM mode)

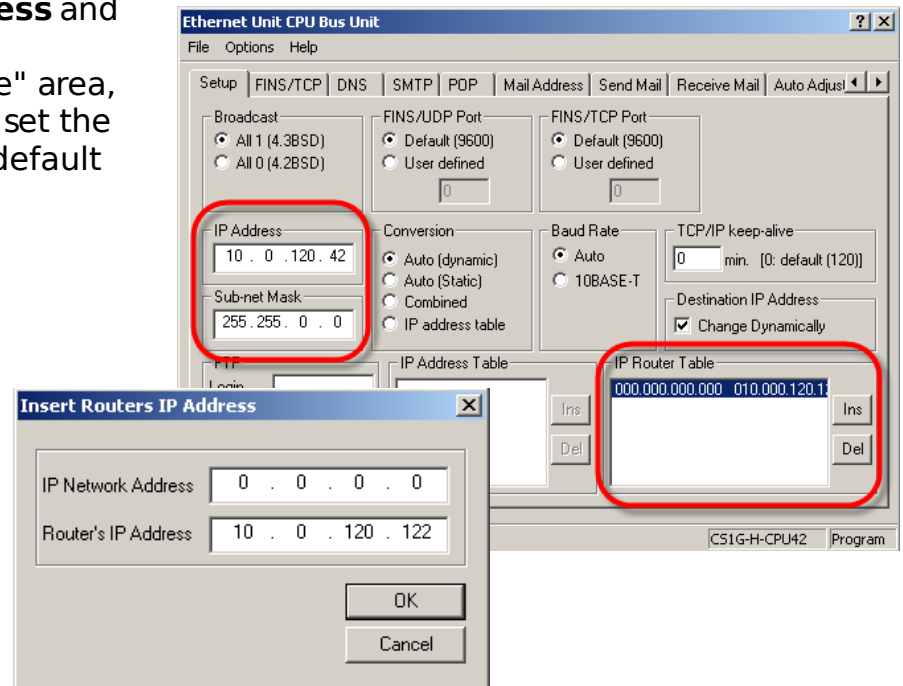


Step 4: Open the "IO Table"
Expand the Main Rack
Right Click on the Ethernet Unit
and select "Unit Setup" in the menu



Step 5: Set the **IP Address** and **Subnet Mask**.

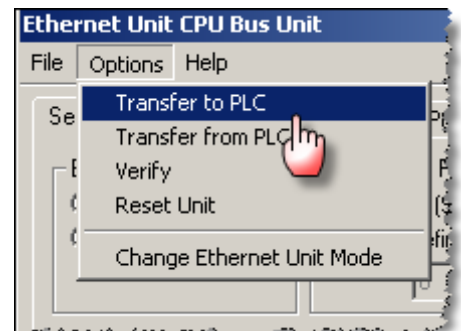
In the "IP Router Table" area, insert a new entry to set the eWON IP address as default Gateway.



KB Name	Ethernet setup of OMRON PLC		
Type	KB		
Since revision	NA		
KB Number	KB-0011-0	Build	4
Mod date	4. Mar 2008		

Knowledge Base Information

Step 6: "Transfer to PLC" to update the settings on the PLC.



Now, your Omron PLC has the IP address and the gateway of your choice.