

# Change the username & password of an eWON

## 1. Introduction

As the eWON is a secure Industrial Product, it is required to change the default password of any eWON you install.

This document resumes the different methods to easily change the login and password of an eWON.

This topic is also covered by the Installation Guide of your eWON.

### - Caution -

*Another very important security aspect to care about is to connect your eWON through a secure link. Therefore it is also required to connect the eWON only from a closed work environment, either through a point-to-point connection, a secured LAN or a secured VPN (for instance using Talk2M).*

## 2. How to change the login and password ?

The login and password of an eWON can be changed using two different ways, either using its Web Interface or through FTP.

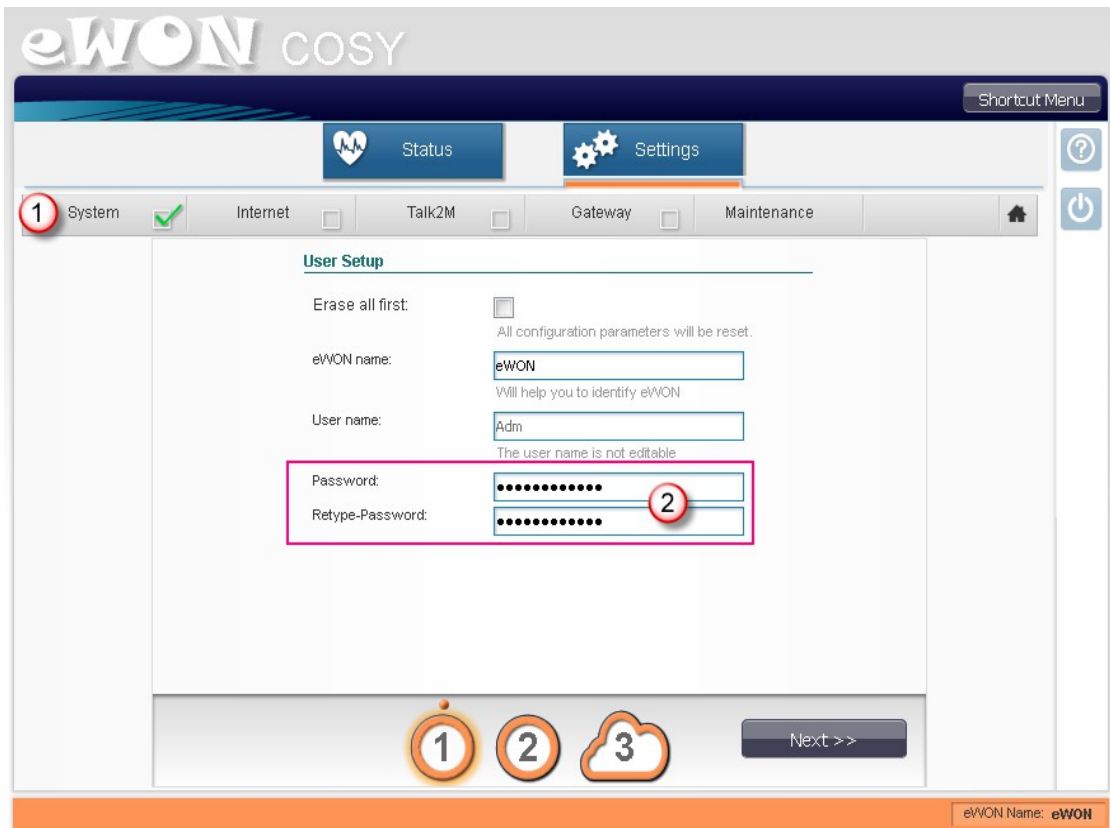
### 2.1. Change the login and password through the eWON Web Interface

The Web Interface of the eWON Cosy and the eWON Flexy/CD are different.

Let's detail both interfaces.

#### 2.1.1. eWON Cosy

The Web Interface of an eWON Cosy is based on multiple Wizards. When you execute the first wizard, named "System Wizard", you are then invited to change the administrator password of your eWON Cosy.



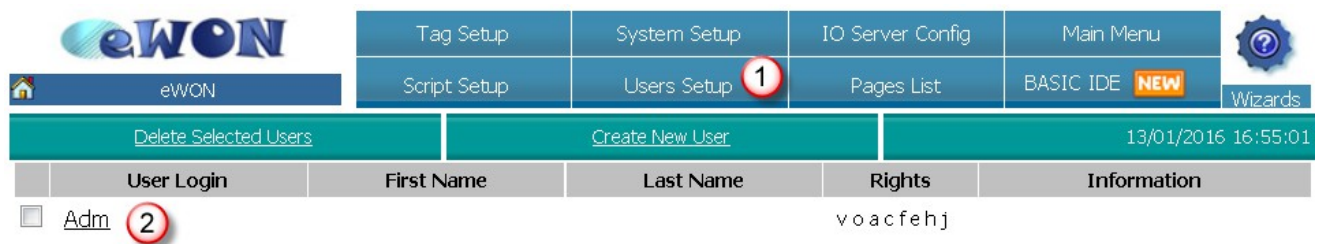
**- Note -**

*The login of the eWON Cosy cannot be changed and always remains "Adm" (not case sensitive).*

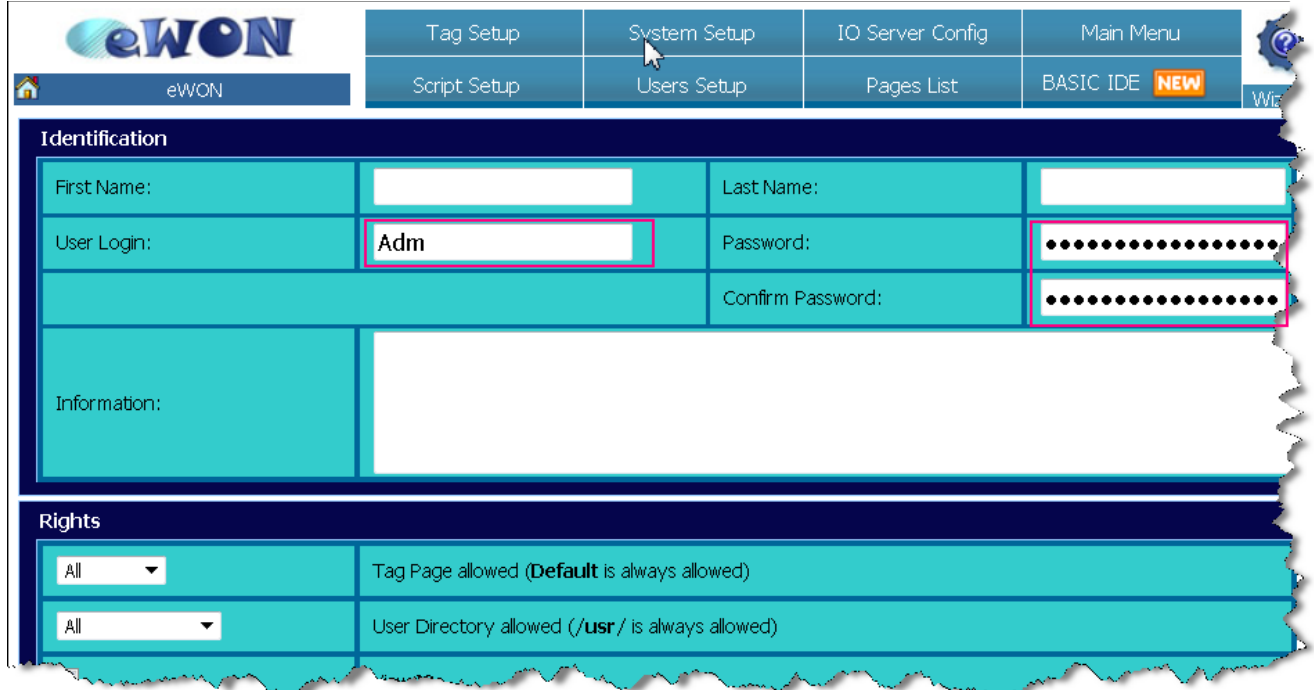
**2.1.2. eWON Flexy/CD**

The eWON Flexy or CD offers a full user management system where you can add, remove or edit users. This can be accessed from the menu "Configuration > Users Setup".

To change the administrator login and password of your eWON, you have to edit the user called "Adm" by clicking it.



From this menu, choose a new administrator login and password.



eWON		Tag Setup	System Setup	IO Server Config	Main Menu
eWON		Script Setup	Users Setup	Pages List	BASIC IDE <b>NEW</b>

<b>Identification</b>			
First Name:	<input type="text"/>	Last Name:	<input type="text"/>
User Login:	<input type="text" value="Adm"/>	Password:	<input type="password" value="....."/>
		Confirm Password:	<input type="password" value="....."/>
Information:	<input type="text"/>		

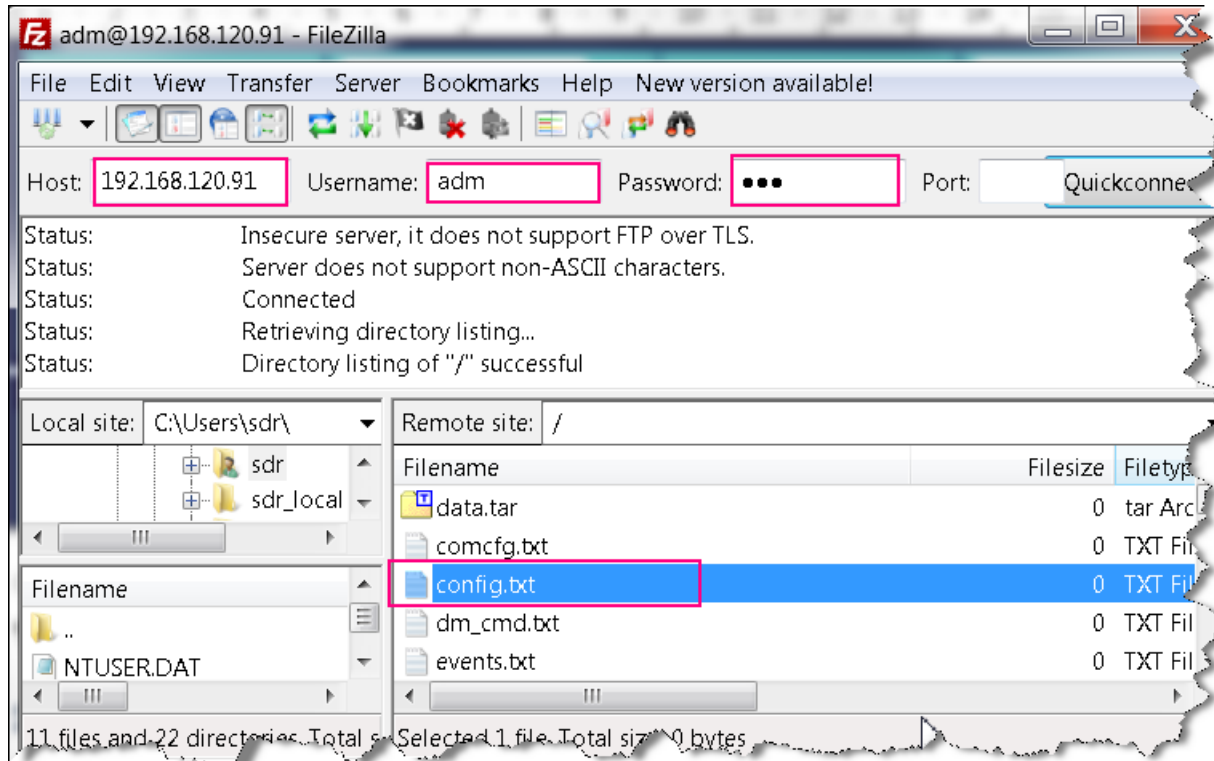
<b>Rights</b>	
All	Tag Page allowed (Default is always allowed)
All	User Directory allowed (/usr/ is always allowed)

Once it is done, click the button "Add/Update".

## 2.2. Through FTP

The eWON offers the possibility to download or upload configuration files directly through FTP. This is a feature common to all models of eWON.

The file that contains the login and password is named "config.txt".



*FTP connection to the eWON using FileZilla FTP Client*

If you download the file with the help of an FTP client and open it with a standard Text editor (ex : notepad), you will find the list of Users defined in your eWON. This list is located at the end of the file and CSV formatted.

```
:UserList
```

```
"Id";"FirstName";"LastName";"Login";"Password";"Information";"Right";"EMA";"SMS";  
AccessPage";"AccessDir";"CBEn";"CBMode";"CBPhNum"
```

```
1;"";"";"Adm";"#_1_BXCTyzM=";"-1";"";"0;0;0;0;"
```

In Red, you can see the login and in blue, the password.

The password of any users is encrypted in the config file. Thus, anyone who has access to this file cannot know the different passwords.

To modify the password, you simply have to replace the password by the new one, save the file and upload it using your FTP client. The modifications will be applied on the fly without the need to reboot the eWON.

**- Note -**

The FTP feature only allows you to modify the password. If you use an eWON Flexy or CD and you rename the "Adm" login, the eWON does not take it in account but simply adds a new user with this new name.

```
1;"";;"Adm";MyNewPassword;"";-1;"";"0;0;0;0;"
```

If you try to download the config.txt file again, you'll see that the modifications have been applied and the password has been encrypted.

```
1;"";;"Adm";#_1_EHuKAEzl;"";-1;"";"0;0;0;0;"
```



## Revision

### Revision History

Revision Level	Date	Description
1.0	13/01/2016	First Version

**Document build number: 22**

**Note concerning the warranty and the rights of ownership:**

The information contained in this document is subject to modification without notice. Check <http://ewon.biz/support> for the latest documents releases.

The vendor and the authors of this manual are not liable for the errors it may contain, nor for their eventual consequences.

No liability or warranty, explicit or implicit, is made concerning the quality, the accuracy and the correctness of the information contained in this document. In no case can the manufacturer's responsibility be called for direct, indirect, accidental or other damage occurring from any defect of the product or mistakes coming from this document.

The product names are mentioned in this manual for information purposes only. The trade marks and the product names or marks contained in this document are the property of their respective owners.

This document contains materials protected by the International Copyright Laws. All reproduction rights are reserved. No part of this handbook can be reproduced, transmitted or copied in any way without written consent from the manufacturer and/or the authors of this handbook.

eWON sa, Member of ACTL Group